

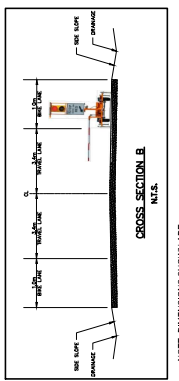
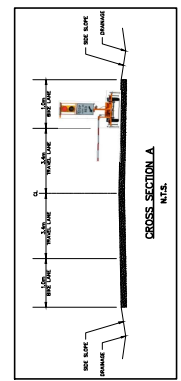
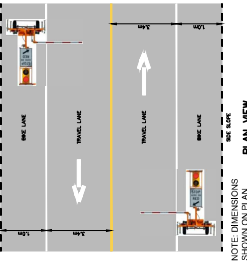
TRAFFIC CONTROL LAYOUT
AP 6B-A-TYSON RD-A&B
BPLP TMEP SPREAD 6B

Calgary, Edmonton, Lloydminster,
 Okanagan, Vancouver, Victoria
WATT
 Consulting Group
 WATTCONSULTINGGROUP.COM

0 ISSUED FOR IMPLEMENTATION
 1 ISSUED FOR IMPLEMENTATION
 2 ISSUED FOR IMPLEMENTATION
 3
 4
 5
 6
 7
 8

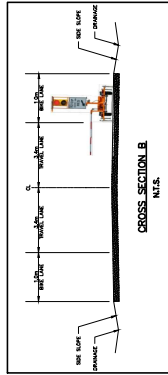
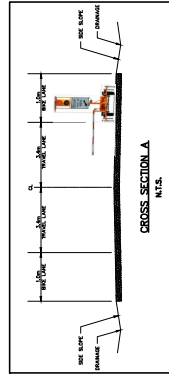
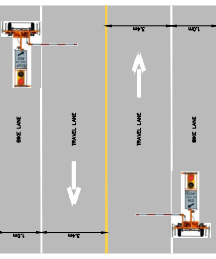
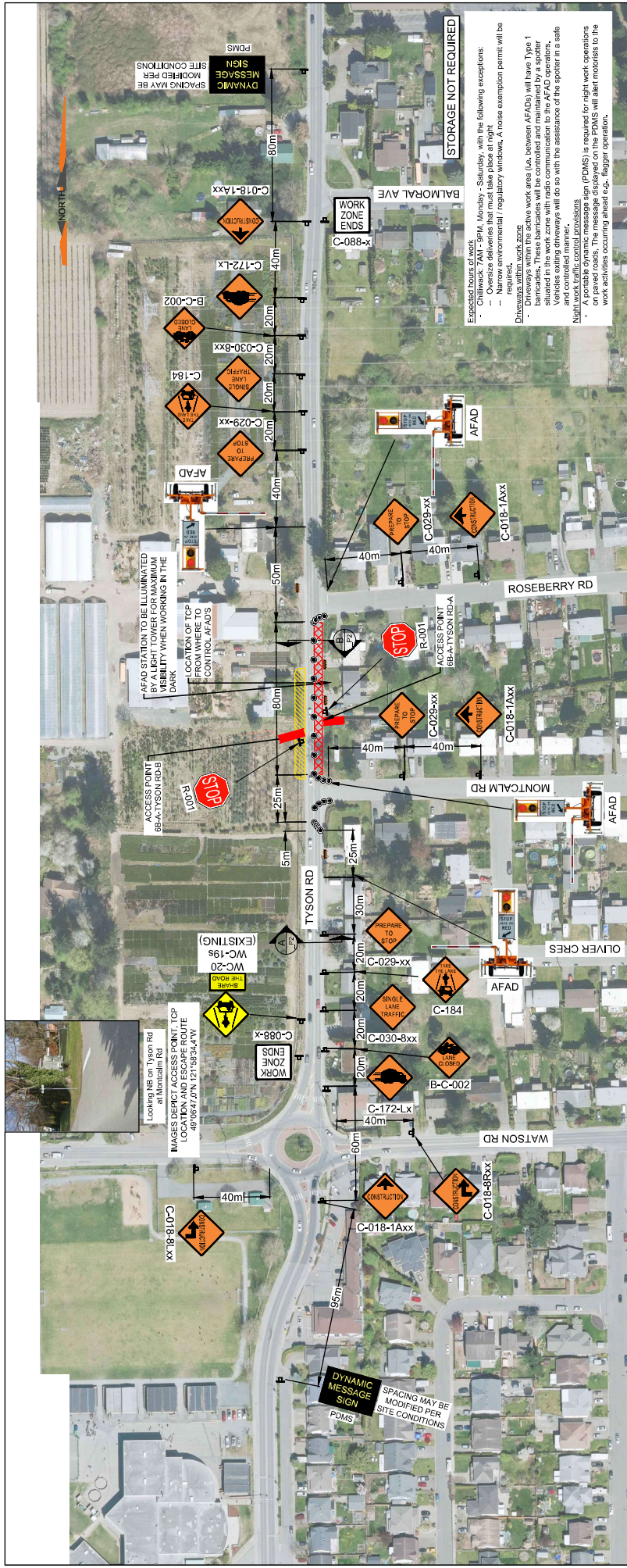
DESIGNED:	DRAWN:	CHECKED:	APPROVED:
TV	TV	KM	KM
DESIGN SPEED:	DESIGN VEHICLE:	PROJECT NO.:	DRAWING NO.:
50 km/h		3431.B01	6B-A-TYSON-A&B_P2
DATE:	REVISION:		
JAN 17, 2023	2		

PERMIT TO PRACTICE
 WATT CONSULTING GROUP LTD
 SIGNATURE
 DATE
 PERMIT NUMBER: 1001432
 ENGINEERS & GEOSCIENTISTS
 BRITISH COLUMBIA



NOTE DIMENSIONS SHOWN ARE SITE SPECIFIC

NOTE DIMENSIONS SHOWN ARE SITE SPECIFIC



SEAL:

PERMIT TO PRACTICE
 WATT CONSULTING GROUP LTD
 SIGNATURE _____
 DATE _____

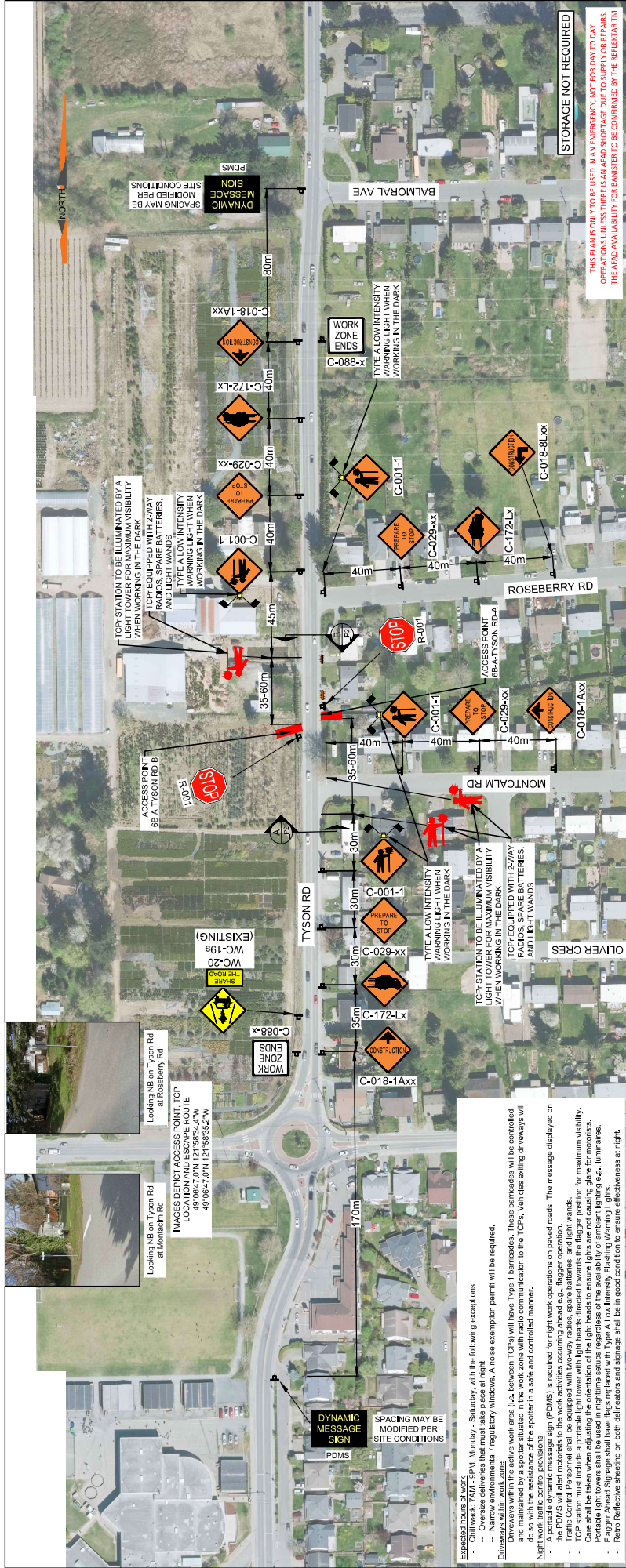
PERMIT NUMBER: 1001432
 ENGINEERS & GEOSCIENTISTS
 BRITISH COLUMBIA

REVISIONS	ISSUED FOR IMPLEMENTATION	DATE
0	ISSUED FOR IMPLEMENTATION	JAN 17 23
1	ISSUED FOR IMPLEMENTATION	JAN 20 23
2	ISSUED FOR IMPLEMENTATION	JAN 27 23
3	DESIGN VEHICLE:	50 km/h
4	PROJECT NO.:	3431.801
5	DRAWING NO.:	6B-A-TYSON-A&B-SLAT_P2
6	DATE:	JAN 17, 2023
7	REVISION:	2
8		

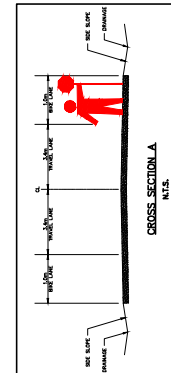
TITLE: **TRAFFIC CONTROL LAYOUT**
AP 6B-A-TYSON RD-A&B-SLAT
BPLP TMEP SPREAD 6B

WATT Consulting Group
 Calgary, Edmonton, Lloydminster,
 Okanagan, Vancouver, Victoria
 WATTCONSULTINGGROUP.COM

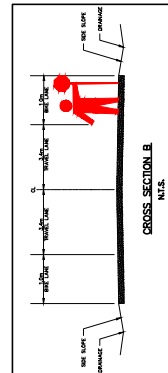
These Design Documents are provided solely for the use by the party with whom the Design Professional has entered into a contract, and there are no representations of any kind made by or on behalf of the Design Professional to any other party.



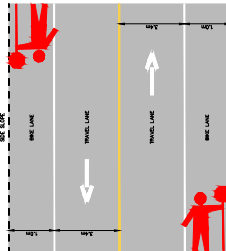
- Expected hours of work
 - Crews: 8:00 AM - Monday - Saturday, with the following exceptions:
 - Crews shall be on site for at least 15 minutes before the start of the work.
 - Narrow environmental / regulatory windows. A noise exemption permit will be required.
 - Diveways within the active work area (i.e. between TCPs). These barricades will be controlled do so with the assistance of the spotter in a safe and controlled manner.
- Night work traffic control provisions
 - A portable dynamic message sign (PDMS) is required for night work operations on paved roads. The message displayed on PDMS shall be:
 - Road Closed
 - Traffic Control Personnel shall be equipped with two-way radios, spare batteries, and light wands.
 - TCP station must include a portable light tower with light heads directed towards the flagger position for maximum visibility. Care shall be taken when adjusting the orientation of the light heads to ensure lights are not causing glare for motorists.
 - Floodable light covers shall be used in nighttime situations to reduce the visibility of ambient lighting e.g., luminaires, street lighting, etc.
 - Retro Reflective sheeting on both delineators and signage shall be in good condition to ensure effectiveness at night.



NOTE: DIMENSIONS SHOWN ARE SITE SPECIFIC



NOTE: DIMENSIONS SHOWN ARE SITE SPECIFIC



NOTE: DIMENSIONS SHOWN ARE SITE SPECIFIC

SEAL:

PERMIT TO PRACTICE
WATT CONSULTING GROUP LTD

SIGNATURE _____

DATE _____

PERMIT NUMBER: 1001432
ENGINEERS & GEOSCIENTISTS
 BRITISH COLUMBIA

REVISIONS

NO.	ISSUED FOR IMPLEMENTATION	DATE
0	ISSUED FOR IMPLEMENTATION	JAN 17 23
1	ISSUED FOR IMPLEMENTATION	JAN 20 23
2	ISSUED FOR IMPLEMENTATION	JAN 27 23
3		
4		
5		
6		
7		
8		

DESIGNED: DRAWN: CHECKED: APRVD: 12.000

DESIGN SPEED: 50 km/h

PROJECT NO: 3431.801

DRAWINGS NO: 6B-A-TYSON-RD-TCPr-P2

DATE: JAN 17, 2023

REVISION: 2

WATT Consulting Group
 Calgary, Edmonton, Lloydminster,
 Okanagan, Vancouver, Victoria
WATTCONSULTINGGROUP.COM

TITLE: **TRAFFIC CONTROL LAYOUT**
AP 6B-A-TYSON RD-A&B-TCPr
BPLP TMEP SPREAD 6B